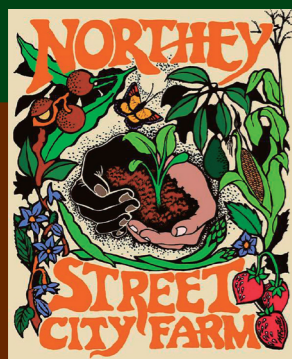


# northy street city farm

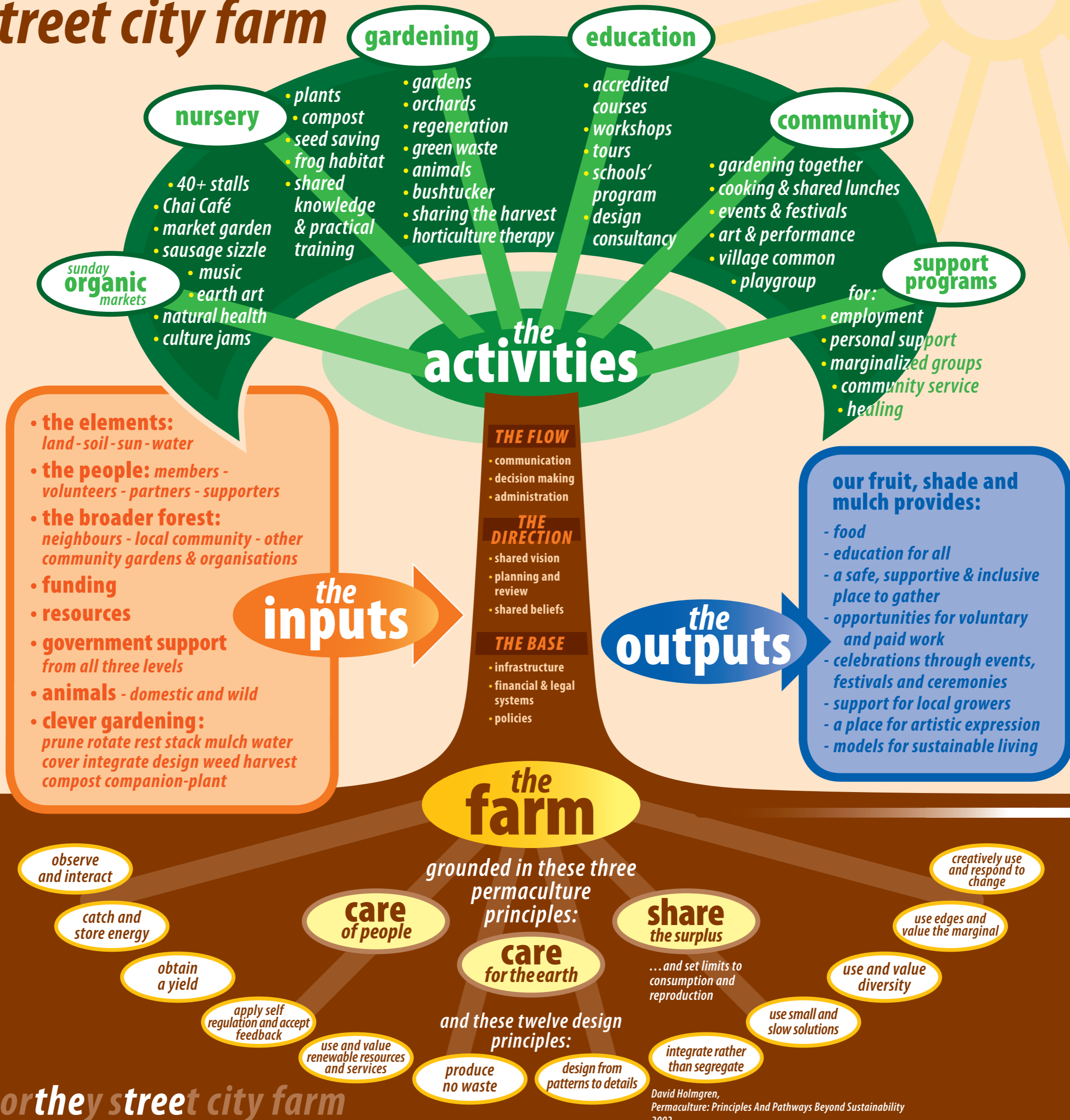
Our mission is to create a working model of a cooperative, community based urban permaculture farm which demonstrates, promotes, educates and advocates for environmental and economical sustainability in a healthy, diverse and supportive community.

.....  
This chart demonstrates the grounding principles of Northey Street City Farm, our main structures, our main activities and the fruit we bear.



Northey Street City Farm  
16 Victoria Street  
Windsor, Brisbane  
Phone 07 3857 8775  
Fax 07 3857 8108  
nnorthy@bigpond.net.au  
www.nscf.org.au

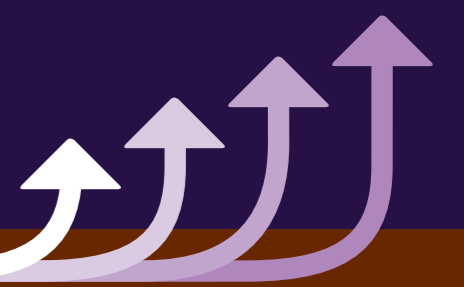
northy street city farm



## the offshoots

beyond our own canopy

- more backyard gardens
- supported gardening through:
  - our design consultancy
  - networking
  - informal support
- more community and school gardens through:
  - the 'Growing Communities' organisation
  - direct education and mentoring
- more people eating organic and local food
- more sustainable practices in homes, businesses and institutions
- a stronger local community
- stronger 'sister groups'
- people and groups growing their own sustainable enterprises



The Northey Street City Farm tree provides community members with the skills, knowledge, motivation and confidence to inspire others to grow food and live sustainably...

David Holmgren, Permaculture: Principles And Pathways Beyond Sustainability 2002